

## Napa County DUI Program

2020 Jefferson St.  
Napa, CA 94558  
(707) 255-8300

### Hours of Operation:

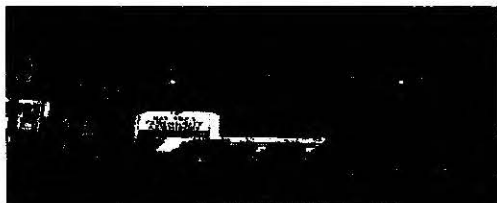
#### Business Office

10:00AM–7:00PM Mon–Thurs

10:00AM–3:00PM Friday

#### Program

10:00AM–9:00PM Mon–Fri



Bay Area Community Resources

### About BACR

Bay Area Community Resources (BACR), founded in 1976, promotes the healthy development of individuals, families and communities through direct services, volunteerism and partnerships in the San Francisco Bay Area. BACR's diverse programs focus on the following areas: After School Programs; Youth Development, Alcohol, Tobacco and Drugs; Mental Health; National Service; Community Health and Fiscal Sponsorship.

For general information about BACR call **(415) 444-5580** or visit online at [www.bacr.org](http://www.bacr.org)

## Napa County DUI Program

Tel: (707) 255-8300

- Encouraging Individuals to identify and resolve alcohol-related problems
- Supporting positive changes in lifestyle
- Protecting the public health and safety upon the roadways

[www.napa-dui.org](http://www.napa-dui.org)



Bay Area Community Resources

# Napa County DUI Program

## Services offered:

- Treatment program for individuals convicted of driving under the influence of alcohol or drugs
- Alcohol and drug screening and assessment to determine appropriate level of treatment and referrals
- 12 hours of education geared to increasing the participant's knowledge of factors involved with alcohol and drug use and abuse in relation to driving
- Individual and group counseling
- Re-entry check-in focused on relapse prevention tactics

Services are provided in accordance with Title 9 of the California Code of Regulations

**Our participants are court-ordered and/or required by DMV to complete a DUI program (SB-38)**

**Program and Intake information are provided herein.**

# Participant and Referral Information

## Intake procedure:

- 1) You may call or come in during business hours to schedule an intake appointment
- 2) Bring the following items to your intake appointment:
  - ✓ **DMV printout (H6) or court document ordering enrollment in DUI program.**
  - ✓ **Registration Fee in the form of Check, Money Order or Debit/Credit Card (Visa or MasterCard)**
  - ✓ **The violation date.** (Date you were arrested for this DUI. This is not normally on Court documents. You cannot be registered without providing this date.)
- 3) **Be on time for appointment and allow two (2) hours minimum for intake**

## Program Requirements & Costs

### **Enrollment by appointment only.**

#### ***Wet & Reckless - 12 Hour Education***

6 two-hour Education sessions (12 hours)  
**Registration Fee (due at intake) \$150**  
**Total Program Cost \$355.45**

#### ***First Offender Program, 15 weeks***

6 two-hour Education sessions (12 hours)  
3 fifteen-minute Counseling sessions (0.75 hours)  
9 two-hour Group Counseling sessions (18 hours)  
**Registration Fee (due at intake) \$200**  
**Total Program Cost \$628.45**

## Program Requirements & Costs (continued)

#### ***First Offender Program, 6 months***

6 two-hour Education sessions (12 hours)  
4 fifteen-minute Counseling sessions (1 hour)  
16 two-hour Group Counseling sessions (32 hours)  
**Registration Fee (due at intake) \$200**  
**Total Program Cost \$1,033.75**

#### ***First Offender Program, 9 months***

6 two-hour Education sessions (12 hours)  
5 fifteen-minute Counseling sessions (1.25 hours)  
24 two-hour Group Counseling sessions (48 hours)  
**Registration Fee (due at intake) \$200**  
**Total Program Cost \$1,346.65**

#### ***Multiple Offender Program, 18 months***

6 two-hour Education sessions (12 hours)  
26 fifteen-minute Counseling sessions (6.5 hours)  
26 two-hour Group Counseling sessions (52 hours)  
3 two-hour After Care Group sessions (6 hours)  
**Registration Fee (due at intake) \$200**  
**Total Program Cost \$1,737.25**

**Napa County DUI Program**

2020 Jefferson St.  
Napa, CA 94558